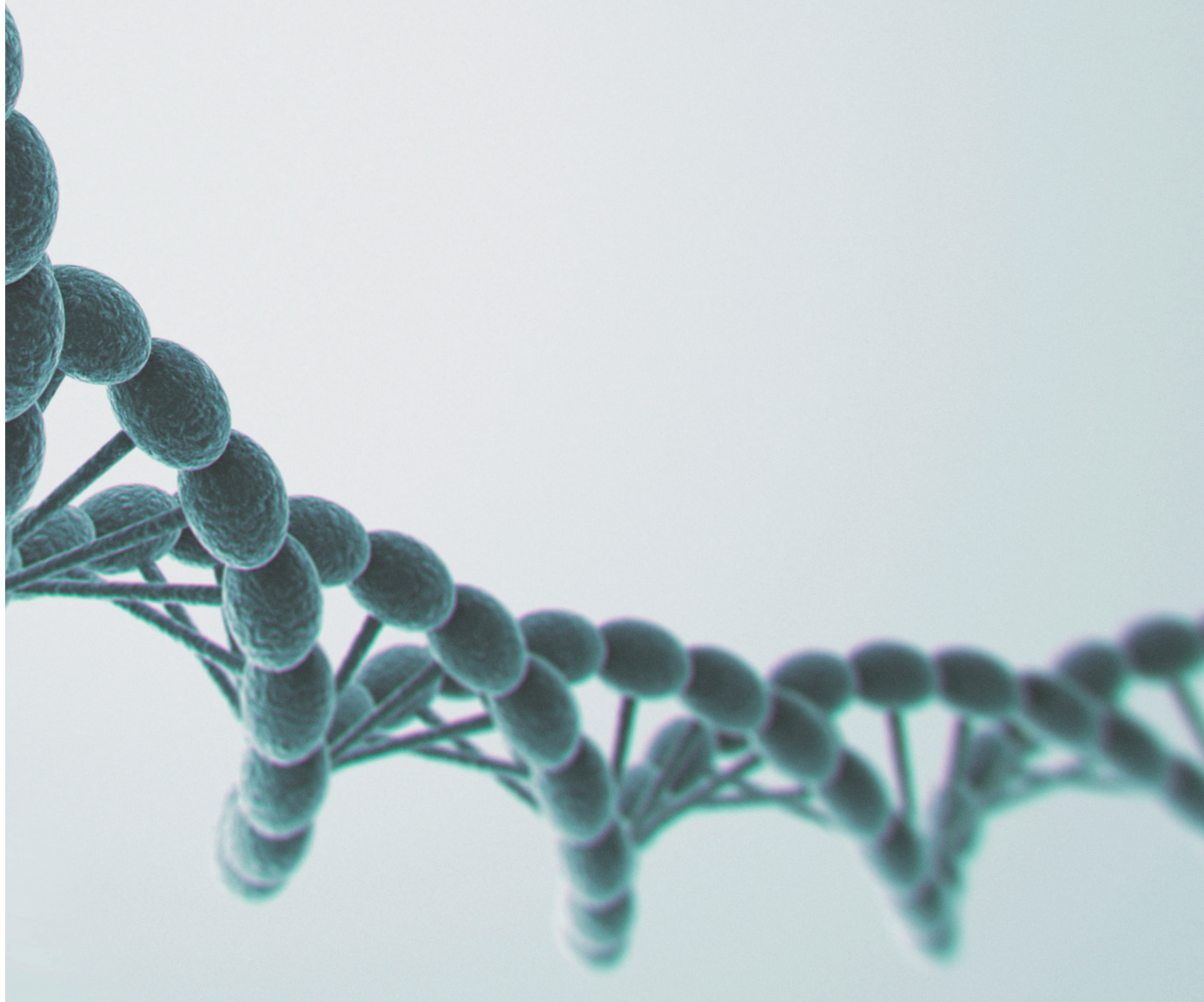




The Nucleic Acid Experts.



Available in Canada from...



1-888-593-5969 • biolynx.ca • tech@biolynx.ca



Applications

		EchoLUTION™ Viral RNA/DNA Kit IVD product	EchoLUTION™ Viral RNA/DNA Kit	EchoLUTION™ Tissue DNA Kit	EchoLUTION™ Cell Culture DNA Kit	EchoLUTION™ Cell Culture RNA Kit	EchoLUTION™ FFPEDNA Kit	EchoLUTION™ FFPE RNA Kit	EchoLUTION™ Blood DNA Micro Kit	EchoLUTION™ Buccal Swab DNA Kit	EchoLUTION™ Plant DNA Kit	EchoCLEAN™ DNA CleanUp Kit (for DNA >50 bp)	EchoCLEAN™ Organic Solvent DNA CleanUp Kit	EchoCLEAN™ RNA CleanUp Kit
Specifications	Target nucleic acid	DNA RNA	DNA RNA	DNA	DNA	RNA	DNA	RNA	DNA	DNA	DNA	DNA	DNA	RNA
	Available formats	Plate	Spin column	Spin column Plate	Spin column Plate	Spin column Plate	Spin column	Spin column	Spin column	Spin column Plate	Spin column Plate	Spin column	Spin column	Spin column
	Input amount	1 swab/ 25 mg stool	1 swab	10–20 mg	Up to 2 × 10 ⁶ cells	Up to 2 × 10 ⁶ cells	100–800 mm ² (thickness 10 µm) or 1–15 mg FFPE tissue	100–800 mm ² (thickness 10 µm) or 1–15 mg FFPE tissue	5 punches (~3 mm)	1 swab	10–50 mg	Up to 100 µL	Up to 100 µL	Up to 100 µL
	Elution volume	100 µL	100 µL	100 µL	100 µL	100 µL	80 µL	80 µL	100 µL	100 µL	100 µL	100 µL	100 µL	100 µL
	Yield/ copies per mL	1 × 10 ³ – 1 × 10 ⁶ cp/mL	1 × 10 ³ – 1 × 10 ⁶ cp/mL	5–2 µg	15–30 µg	30 µg*	*	*	1–2 µg	1–3 µg	2–8 µg	*	*	*
Sample type	Dry swabs	■	■							■				
	Swabs in transport media	■	■											
	Stool	■												
	Human/animal tissue			■										
	Human/animal cell culture				■	■								
	Dried blood spots (DBS)								■					
	FFPE tissue						■	■						
	Plant										■			
	DNA											■	■	
	RNA													■
Sample condition	Fresh	■	■	■	■	■			■	■	■			
	Frozen	■	■	■	■	■					■			
	Stabilized	■	■	■	■	■			■					
	Formalin-fixed paraffin-embedded						■	■						
Downstream applications	End point and real time PCR based-methods	■	■	■	■	■	■	■	■	■	■	■	■	■
	Capillary gel electrophoresis based-methods	■	■	■	■	■	■	■	■	■	■	■	■	■
	Next-generation sequencing (NGS)	■	■	■	■	■	■	■	■	■	■	■	■	■
	Microarrays	■	■	■	■	■	■	■	■	■	■	■	■	■
Typical application fields	Diagnosis of infectious diseases	■												
	Oncology			■	■	■	■	■						
	Agricultural biotechnology			■					■	■	■	■	■	■
	Biopharma and biotech R&D	■	■	■	■	■	■	■	■	■		■	■	■
	Academic and basic research	■	■	■	■	■	■	■	■	■	■	■	■	■

* Depends on input material

Product overview



www.bioecho.com

MJS
BioLynx[®]

 CHROMATOGRAPHIC
SPECIALTIES INC.

1-888-593-5969 • biolynx.ca • tech@biolynx.ca