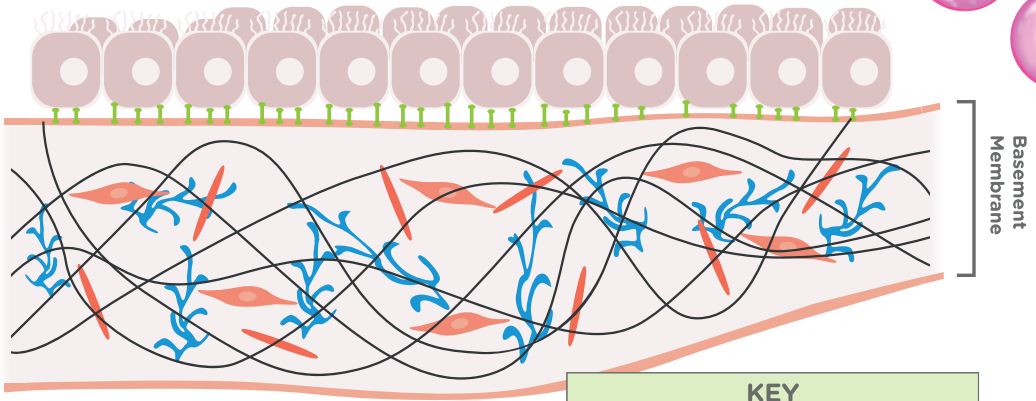




PeptiGel® Functional Kits

Providing biochemical cues to investigate the response of cells in the 3D environment



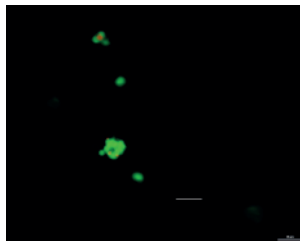
KEY	
Fibroblast	Collagen/Laminin
Fibronectin	Integrins
Proteoglycan	Epithelial Cells

The benefits...

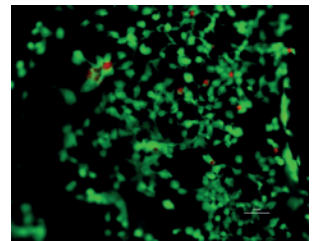
- Chemically defined
- Animal Free
- Reproducible
- Ready to use at room temp.
- Transparent
- Biocompatible

3T3 Fibroblasts

PeptiGel® Alpha1



PeptiGel® Alpha1-RGD



PeptiGel® Alpha1-RGD showing higher cell proliferation compared to standard PeptiGel® Alpha1.



Our PeptiGels® can be used for **2D and 3D cell culture** and **their stiffness, charge and biochemical cues** can all be **controlled independently to replicate the native cellular environments** of most human tissue.

Try our PeptiGels® Functional Kit to discover the ideal *in vivo*-like functionality for your cells' needs

Functional Kit	Kit 1	Kit 2	Kit 4
G' (kPa)	~5	~10	~1
Charge	0	+1	+2

We can functionalise our PeptiGels® with integrin binding sequences to **meet your specific cells' needs**.

These include:-

- **RGD** (fibronectin)
- **IKVAV** (laminin)
- **YIGSR** (laminin)
- **GFOGER** (collagen)
- **Fluorescent labels**

Featured in the following publications:

- Advanced Functional Materials
- Journal of Tissue Engineering
- Material Letters
- Acta Biomaterialia
- Materials Science & Engineering
- Cancers



www.manchesterbiogel.com

MJS
BioLynx
INC.

1-888-593-5969 • www.biolynx.ca • tech@chromspec.com

