

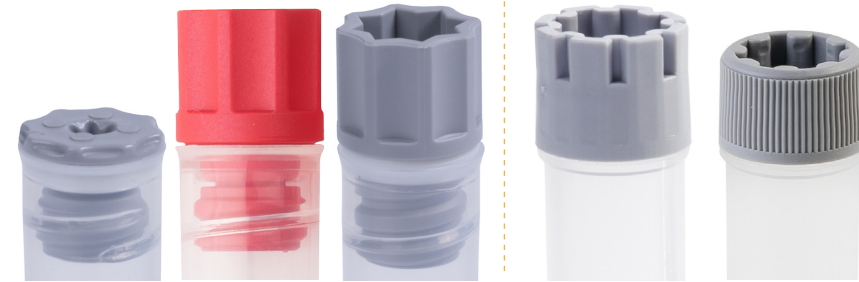
SUPERIOR CAP FEATURES

SCREW CAPS

All Screw Caps are manufactured from virgin plastic raw material, RNase/DNase and pyrogen free, automation friendly and have a working range of: Vapor phase LN2 to +100°C

High quality Silicon O-ring allows for optimal sealing for tubes with internal thread

Available in 12 colors



Available in 12 colors



Triple start thread allows for the tightest seal possible for tubes with external thread

Right: Optimized for automated handling (Screw Cap IG)

PUSH CAPS

TPE Push Caps for tubes with internal thread & external thread

TPE Caps in Natural: manufactured from materials for medical or non-medical applications

Available with split septum to pierce with a pipette tip

RNase / DNase and Pyrogen free



Working range: -80°C to +100°C (without foil)

Multi-pierceable without losing sealing integrity

Available in Natural + 12 colors



OPTIONAL SERVICES / FEATURES



Pre-capped on Micronic Tubes

All Micronic cap types are available pre-capped on Micronic Tubes. Micronic Screw Cap Tubes can be sealed with either a Screw Cap or Push Cap. Micronic Push Cap Tubes can be sealed with a Push Cap.

Sterilization using Gamma Irradiation

Upon request, Micronic products can be supplied gamma irradiated. Irradiation itself cannot guarantee that the product is free from any detectable RNases, DNases or pyrogens. Class 7 clean room production is therefore an essential requirement.

Sterilization using EtO Treatment

Upon request, Micronic products can be supplied ethylene oxide treated. Using a novel ethylene oxide treatment process - Micronic's consumable products are independently certified to be absolutely DNA-free and therefore provide the perfect medium for long-term, high integrity storage of forensic samples. Micronic is offering the DNA-free products in a special Tyvek packaging.

STERILIZATION



© 2021 Micronic. All rights reserved. Specifications are subject to change. [PD807107]

AVAILABLE TECH NOTES

CAP COLOR CODING

During the collection, processing and storage of samples, sample traceability is crucial. While most laboratories use 1D barcodes and 2D codes on sample tubes to ensure traceability of samples, cap color inspection will further promote the tube identification process.

Cap color coding in laboratories is particularly useful to distinguish between different types of research purposes. Color provides a visual clue that works faster than text alone. By adding cap color coding next to 1D barcodes and 2D codes, users can speed up sample storage and retrieval time, eliminate human errors, and reduce the risk of lost samples.

To ensure that aliquots, which are transferred from sample collection tubes (vacuum tubes) into smaller sample storage tubes, can still be identified by cap color inspection, Micronic offers a standard cap color coding solution for 96-, 48- and 24-format sample storage tubes. The solution can be found in the Tech Note "Cap Color Coding".



CAP SEALING PERFORMANCE

Sealing integrity is highly important to preserve samples against contamination, evaporation, and integrity loss during short term and long term storage.

Micronic regularly conducts research on its cap sealing properties compared to other brands. This way, Micronic is able to offer the highest quality products in the market. In order to compare the closure of Micronic Screw Caps and Push Caps related to other brands, several evaporation studies were conducted.

The Tech Note about "Cap Sealing Performance" demonstrates Micronic's superior cap and tube combination quality compared to other brands in the market by showing the results of the conducted evaporation tests.



Micronic America

(North, Central and South America)
Tel: +1 484 480 3372

Micronic Asia

(Asia and Pacific)
Tel: +65 85 028 878

Micronic Europe

(Europe, Middle East and Africa)
Tel: +31 (0)320 277 070

Email: sales@micronic.com
www.micronic.com



Available in Canada at ... **MJS BioLynx**
A Division of... **CHROMATOGRAPHIC SPECIALTIES INC.**

1-888-593-5969 • biolynx.ca • tech@biolynx.ca

MICRONIC
INNOVATION IN SAMPLE STORAGE

BROCHURE



SERVING SCIENTISTS
SINCE 1984

CERTIFIED CLASS 7 CLEAN ROOM
MANUFACTURING

ASSEMBLY IN
THE NETHERLANDS AND
THE UNITED STATES

CAPS FOR SAMPLE STORAGE TUBES

Screw Caps & Push Caps

SCREW CAPS FOR TUBES WITH EXTERNAL THREAD

The Micronic Screw Caps for tubes with external thread have a triple start thread for the most optimal sealing quality, ensuring long-term sample preservation and storage at ultra-low temperatures. To prevent the Screw Cap from overturning - manually or mechanically - the screw cap is designed with a unique lock when sealed (no cap or tube exhaustion). For automated handling, the Screw Cap IG is available.

The Screw Caps for externally threaded tubes in 96-well format are compatible with Micronic sample storage tubes in the volumes 0.30ml, 0.40ml, 0.75ml, 0.80ml, 1.40ml and 2.00ml. The Screw Caps for externally threaded tubes in 48-well format are compatible with the 1.00ml, 2.00ml, 3.00ml and 4.00ml tubes. The Screw Caps for externally threaded tubes in 24-well format are compatible with the 1.50ml, 3.00ml, 3.50ml and 6.00ml tubes. The Micronic Screw Caps for tubes with external thread are available in 12 different colors, providing for visual color identification. Color provides a visual clue that works faster than text alone. Micronic offers Screw Caps in an automation friendly Cap Carrier. The Screw Cap Carrier is compatible with Micronic Screw Cap Recappers.



Screw Caps 96-well format

For all Micronic Screw Cap Tubes (external thread)



Screw Caps 48-well format

For all Micronic Screw Cap Tubes (external thread)



Screw Caps 24-well format

For all Micronic Screw Cap Tubes (external thread)



SCREW CAPS FOR TUBES WITH INTERNAL THREAD

The Micronic Screw Caps for tubes with internal thread provide a secure closure for long-term sample storage at ultra-low temperatures or a safe sealing during the transportation of your samples. The caps feature a high quality Silicon O-ring to allow for the tightest seal possible.

The Screw Caps for internally threaded tubes in 96-well format (standard profile, low profile and ultra) are compatible with Micronic sample storage tubes in the volumes 0.50ml, 0.75ml, 1.10ml, 1.40ml and 2.00ml. The Screw Caps for internally threaded tubes in 48-well format are compatible with the 4.00ml tubes and the Screw Caps for internally threaded tubes in 24-well format are compatible with the 6.00ml tubes. The Micronic Screw Caps with a standard or low profile for tubes with internal thread are available in 12 different colors, the Screw Caps Ultra for tubes with internal thread are available in 4 premium colors.

For an easy and fast application or removal of Screw Caps, Micronic offers a range of DeCappers. The manual Screw Cap DeCappers can apply or remove a single cap. The automated Screw Cap Recappers can apply or remove caps from a row of 4/6/8 tubes or an entire rack of 24/48/96 tubes.



Screw Caps 96-well format

For all Micronic Screw Cap Tubes (internal thread)



Screw Caps 48-well format

For all Micronic Screw Cap Tubes (internal thread)



Screw Caps 24-well format

For all Micronic Screw Cap Tubes (internal thread)



PUSH CAPS FOR TUBES WITH INTERNAL AND EXTERNAL THREAD

The Micronic TPE Push Caps for tubes in 96-well format are compatible with the 0.30ml, 0.40ml, 0.50ml, 0.75ml, 0.80ml, 1.10ml, 1.40ml, 2.00ml, and 2.50ml tubes (internal & external thread) from Micronic. Several TPE cap formats are available: the Capcluster-96 which leaves each tube individually capped, the Capmat-96 holds 96 caps in a fixed foil in which the tubes are sealed together, and the Capband-8 comes in a mat format with tear off lines to obtain cap strips. The full TPE cap range is available in Natural and 12 different colors.

Micronic TPE Lyo Caps-96 are specially developed for the lyophilisation process as the vents in the caps allow water vapor to escape from the tubes. The TPE Lyo Caps are compatible with all 96-well format tubes (internal thread) and available in a Capcluster-96 format.

The EVA Push Caps from Micronic are a cost effective way to securely close sample storage tubes. The EVA Push Caps are compatible with 1.40ml round bottom internally threaded tubes and available in Capmat-96, Capband-8 and break-off Capband-8 (transparent).



TPE Push Caps 96-well format

For all Micronic Screw Cap and Push Cap Tubes (internal thread)



TPE Lyo Caps 96-well format

For all Micronic Screw Cap and Push Cap Tubes (internal thread)



EVA Push Caps 96-well format

For Micronic Push Cap Standard Tubes (internal thread)



TPE Push Caps 96-well format

For all Micronic Screw Cap Tubes (external thread)

