

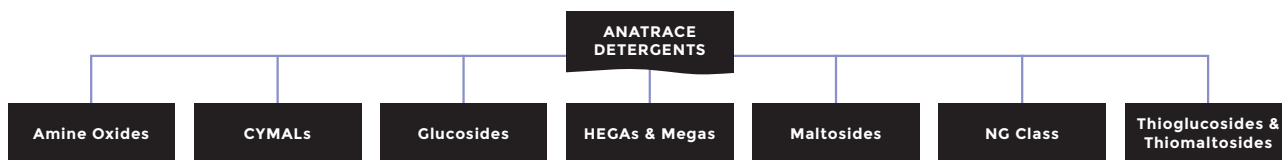
DETERGENTS

anatrace



Anatrace® has been the leader in supplying high-purity detergents to research facilities, academic institutions, and industrial customers since the late 1980s. Since the launch of our first detergent, Dodecyl Maltoside (DDM), our portfolio has grown into the largest in the industry—with more than 50 unique detergents. Anatrace detergents have a wide variety of applications including membrane protein extraction, solubilization, purification, manipulation, and structural determination by X-ray crystallography or NMR.

Our detergents are grouped into seven broad categories:



In addition to offering highly purified maltosides and glucosides, Anatrace also tailors these popular molecules into useful derivatives to meet your specific needs including Anagrade® and Sol-Grade®, Low or High Alpha anomer, as well as Deuterium, NG Class, Sulfur, and Selenium forms.

Anatrace also takes pride in helping scientists unravel once unsolvable challenges by providing custom synthesis services and expert analytical work to aid your research and development team. Contact our chemists to help you develop specialized solutions tailored to meet your unique specifications, allowing your experiments to reach for new heights.

Available in Canada from...

MJS
BioLynx
INC.

1-888-593-5969 • www.biolynx.ca • tech@chromspec.com



LIPIDS

anatrace



Whether you are working with membrane-bound proteins or trying to find ways to stabilize macromolecules, lipids have become valuable tools. While lipids also have the same general structure as detergents—a polar hydrophilic head group and a nonpolar hydrophobic tail—lipids differ from detergents in the shape of the monomers, in the type of aggregates formed in solution, and in the concentration range required for aggregation. Anatrace phospholipid analogs offer lipid alternatives for all of your membrane protein applications.

Anatrace's products include:

- ★ Fos-Choline® Detergents
- ★ Short Chain Lipids, or PCs, PGs, and PEs
- ★ Cholesterols
- ★ Cyclofos™ Detergents
- ★ Fos-Mea® Detergents
- ★ Lysofos® Detergents

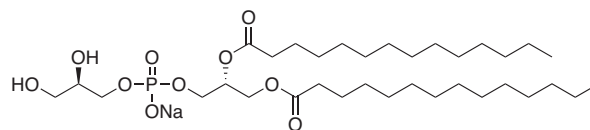
Our Fos-Choline line of lipid-like surfactants range in tail groups with chain lengths from 8 (Octyl) to 16 (Hexadecyl) carbons and is highly effective at increasing solubilization yields. This line also features specialty deuterated versions for improved NMR analysis. For detergent screening, try our most popular Fos-Choline collections (FC-12, FC-13, and FC-14) to maximize the probability of finding the best fit for your molecule.

Cholesterol-based surfactants have become highly sought after. Anatrace responded to customer demand with our water-soluble cholesterol derivatives, β -Chobimalt and Cholesteryl Hemisuccinate, which have been instrumental in crystallizing membrane proteins with Lauryl Maltose Neopentyl Glycol (NG310) and/or MonoOlein (LCP18).

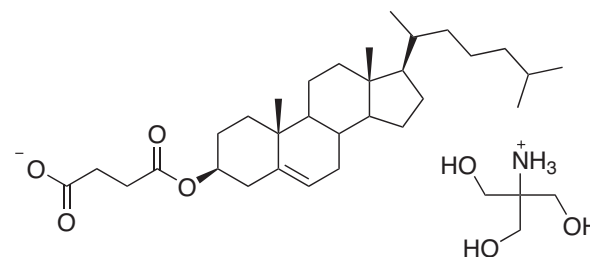
If your work requires true lipids, we recommend trying one of our recently introduced lipids. Choose from 9 different lipids including DMPC (D514), POPE (P416), DHPC (D606/7), and POPC (P516).

From functional studies of membrane proteins to industrial applications, our ever-expanding line of lipids and lipid-like surfactants will help you take the art of stabilizing molecules to new elevations and improve your results.

D614 DMPG



CH210 CHOLESTERYL HEMISUCCINATE



MJS
BioLynx
INC.

1-888-593-5969 • www.biolynx.ca • tech@chromspec.com