

The Fastest Direct Printer for Labware

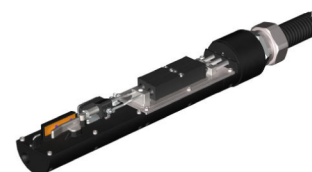
- Direct tube printing eliminates adhesive labels and messy handwriting
- High-speed – Up to 2,500 tubes / hour
- Any labware – Microcentrifuge tubes, screw cap tubes, conical tubes, snap cap tubes, cluster tubes, cryogenic vials, histology cassettes, slides and microplates.
- Scannable barcode printing *on demand* (e.g., 2D Data Matrix, Code 128, etc.)
- Excel Interface or LIMS Integration
- Proven assembly-line technology for the lab bench



High-throughput printing



Benchtop printing



Precise Ink delivery system

Tradition of Innovation

TubeWriter 360™ expands on the TubeWriter product line by employing a high-speed ink-delivery system used in over a quarter of a million systems world-wide. The inkjet technology has been tested and re-tested in harsh industrial conditions.

Continuous inkjet technology brings higher speed, higher resolution to the life science laboratory. Barcodes, graphics and smaller more legible fonts are all now possible on your tubes. 2,000 inkjet service professionals for best after-sales service.

Integration

Enter information in a simple Excel spreadsheet or integrate with your LIMS system.

Who can benefit from TW360?

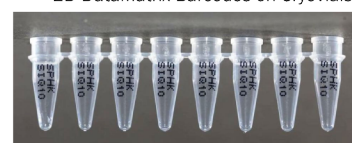
- Cell banks storing cryovials exposed to liquid nitrogen and -80°C .
- Reagent manufacturers. Protects identification in dry ice and eliminates use of adhesive labels
- QA / QC labs where every sample must be tracked and positively identified.
- High-volume clinical reference and testing labs
- Tube manufacturers needing flexible printing solutions for custom runs
- Life science organizations looking to reduce time-to-market on drug discovery.



Fine Print on Small Tubes



2D DataMatrix Barcodes on Cryovials



Print on Any Labware - 0.2ml PCR Strips

Specifications subject to change without notice.
Copyright 2014 California Advanced Labeling, Inc.

Available in Canada from...

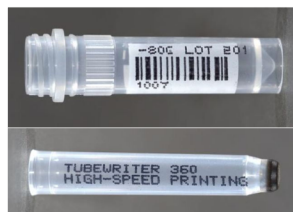
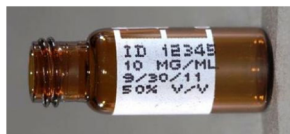
MJS
BioLynx
INC.

Contact us for samples or more information at:

1-888-593-5969 • www.biolynx.ca • tech@biolynx.ca



TubeWriter 360™ Specifications		
Printing Speed	Up to 2,500 tubes/hour	
Data Input	Microsoft Excel, comma delimited, LIMS, or custom database integration available	
Ink	Waterproof Alcohol-resistant	Widest range of industrial grade inks Durable in liquid nitrogen and -80C
Media Types	96-well Plates Cell Culture Plates Cluster Tubes Conical Tubes (5, 15, 50ml) Cryogenic Vials Microcentrifuge Tubes	Microscope Slides PCR Tubes Petri Dishes Screw Cap Tubes Snap Cap Tubes (5, 15ml) Custom labware
Writing Surfaces	Top (cap), Side (body), Glass, Plastic	
Barcodes	Data Matrix, Linear, 2D, Code 128	
Alphanumeric	Heights from 0.079" (2mm) - 0.400" (10mm)	
Graphics	Logos, Warning symbols, Manufacturing Marks	
Scannability	Fixed mount and hand-held scannable	
Printable Lines	2-5 lines with maximum of 50 characters per line (depends on labware)	
Tubes printed per run	8-96 depending on media type	
Connectivity	USB	
Compatibility	PC	
Size and Weight	TubeWriter Printing Unit—measures 18"x18"x16"(WxLxH) weighing 50 lbs InkJet Cabinet—measures 13.6"x11.2"x21.3"(WxLxH) weight 49 lbs	
Electrical	100-240 VAC 50/60hz	
Warranty	1-year limited warranty	



Ordering Information		
Product Number	Instruments	List Price
TW0360A	TubeWriter 360™ Direct High-Speed Alphanumeric Printing System for Labware. 6 standard printing racks, software and 1-year warranty included.	CALL
TW0360BUPGRADE	TubeWriter 360™ Barcoding Upgrade. Firmware, Software and Handheld Barcode Scanner included.	CALL
TWINSTALL360	TubeWriter 360™ Installation and Training	CALL
Accessories		
TWPS0000XX360	TubeWriter 360™ Custom SideWriting™ Rack	
TWPT0000XX360	TubeWriter 360™ Custom TopWriting™ Rack	

California Advanced Labeling, Inc.
Fremont, California, USA

BN0216113



TUBEWRITER
360

www.tubewriter.com

MJS
BioLynx
INC.

1-888-593-5969 • www.biolynx.ca • tech@biolynx.ca