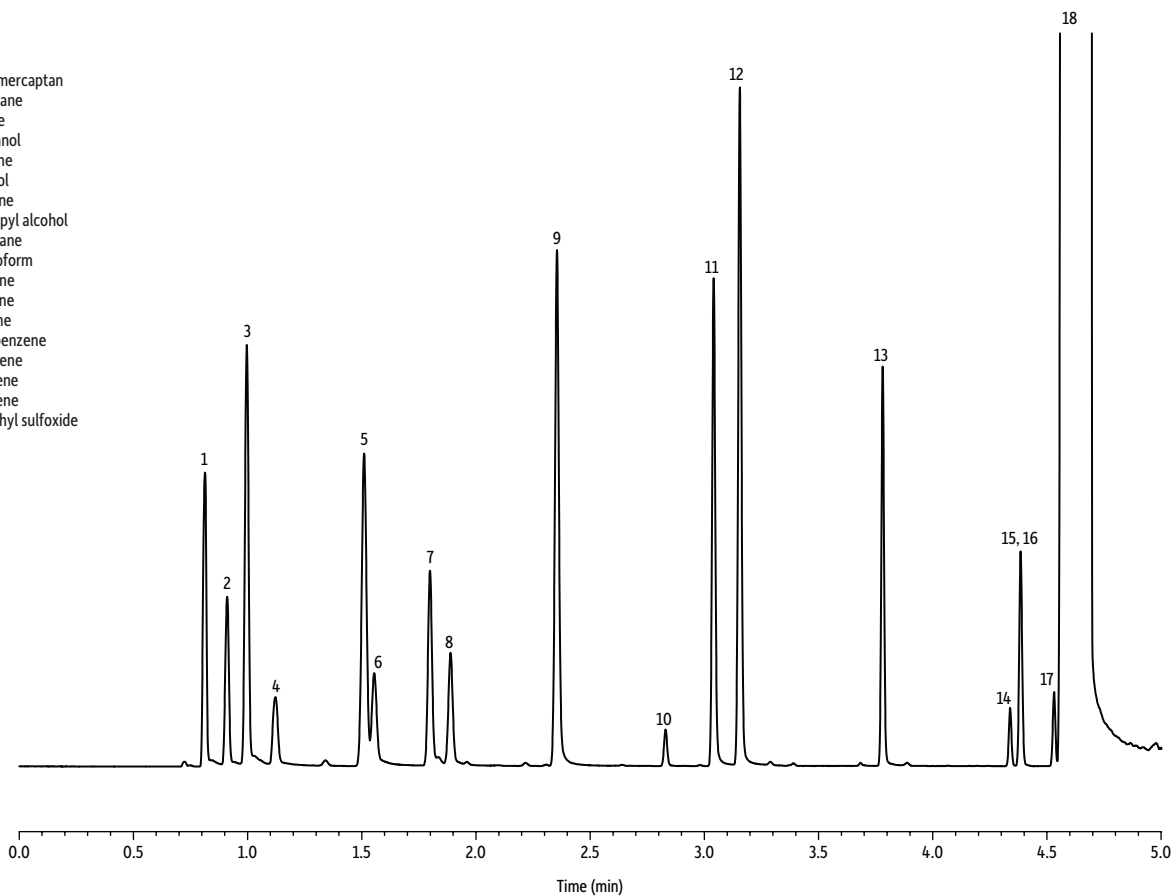


Cannabis Residual Solvents at 50 ppm Cutoff

Peaks

1. Ethyl mercaptan
2. Isobutane
3. Butane
4. Methanol
5. Pentane
6. Ethanol
7. Acetone
8. Isopropyl alcohol
9. *n*-Hexane
10. Chloroform
11. Benzene
12. Heptane
13. Toluene
14. Ethylbenzene
15. *m*-Xylene
16. *p*-Xylene
17. *o*-Xylene
18. Dimethyl sulfoxide



Column Rxi®-624Sil MS, 30 m, 0.25 mm ID, 1.40 µm (cat.# 13868)
Sample Dimethyl sulfoxide
Diluent: 10 ppm (concentration reflects 100 mg of sample at 50 ppm cutoff)
Conc.: headspace-loop split (split ratio 10:1)
Injection Premium 1 mm straight (cat.# 23333.1)
Liner:
Headspace-Loop
Inj. Port Temp.: 200 °C
Instrument: Tekmar HT3
Inj. Time: 1.00 min
Transfer Line Temp.: 160 °C
Valve Oven Temp.: 160 °C
Sample Temp.: 140 °C
Platen temp
equil. time: 1.0 min
Sample Equil. Time: 10.00 min
Vial Pressure: 20 psi
Pressurize Time: 5.0 min
Pressure Equilibration
Time: 0.20 min
Loop Pressure: 15 psi
Loop Fill Time: 2.0 min

Oven
Oven Temp.: 35 °C (hold 1.50 min) to 175 °C at 40 °C/min to 225 °C at 30 °C/min
Carrier Gas He, constant flow
Linear Velocity: 80 cm/sec
Detector FID @ 250 °C
Make-up Gas
Flow Rate: 45 mL/min
Hydrogen flow: 40 mL/min
Air flow: 450 mL/min
Data Rate: 20 Hz
Instrument Agilent/HP6890 GC



**CHROMATOGRAPHIC
SPECIALTIES INC.**



1-800-267-8103 • www.chromspec.com • tech@chromspec.com