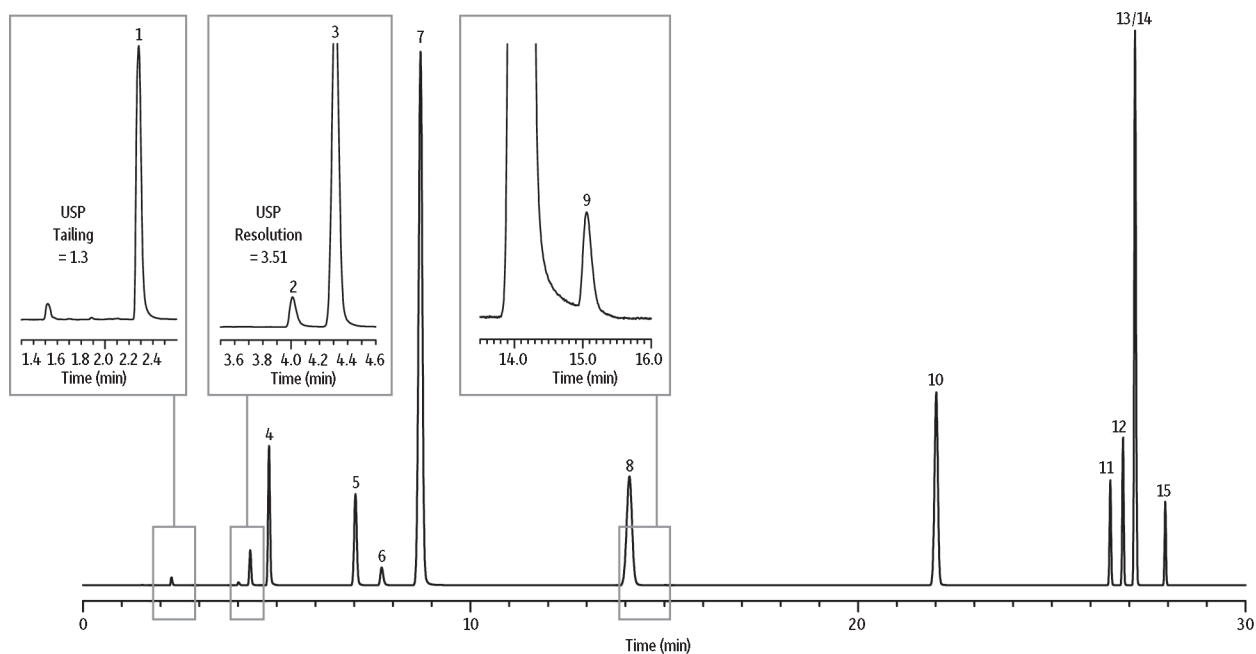


Class 2 - Mix A Residual Solvents for Water-Soluble Articles on Rxi®-624Sil MS



GC_PH1146

Peaks	RT (min.)	Conc. (µg/mL)
1. Methanol	2.281	25.00
2. Acetonitrile	4.009	3.42
3. Dichloromethane	4.313	5.00
4. <i>trans</i> -1,2-Dichloroethene	4.798	7.83
5. <i>cis</i> -1,2-Dichloroethene	7.028	7.83
6. Tetrahydrofuran	7.706	5.75
7. Cyclohexane	8.708	32.33
8. Methylcyclohexane	14.099	9.83
9. 1,4-Dioxane	15.054	3.17
10. Toluene	22.018	7.42
11. Chlorobenzene	26.570	3.00
12. Ethylbenzene	26.837	3.07
13. <i>m</i> -Xylene	27.147	10.85
14. <i>p</i> -Xylene	27.147	2.53
15. <i>o</i> -Xylene	27.927	1.63

Column Rxi®-624Sil MS, 30 m, 0.32 mm ID, 1.80 µm (cat.# 13870)
Sample Residual Solvents Class 2 - Mix A (cat.# 36271)
Diluent: water
Injection headspace-loop split (split ratio 5:1)
Liner: 1mm Split (cat.# 20972)
Headspace-Loop
 Inj. Port Temp.: 140 °C
 Instrument: Tekmar HT3
 Inj. Time: 1 min.
 Transfer Line Temp.: 110 °C
 Valve Oven Temp.: 110 °C
 Sample Temp.: 80 °C
 Sample Equil. Time: 60 min.
 Vial Pressure: 10 psi
 Pressurize Time: 0.5 min.
Pressure
 Equilibration Time: 0.05 min.
 Loop Pressure: 5 psi
 Loop Fill Time: 0.1 min.
Oven
 Oven Temp: 40 °C (hold 20 min.) to 240 °C at 10 °C/min. (hold 20 min.)
Carrier Gas He, constant flow
 Linear Velocity: 35 cm/sec.
 Dead Time: 1.45 min. @ 40 °C
Detector FID @ 250 °C
 Data Rate: 5 Hz
Instrument Agilent/HP6890 GC
Acknowledgement Teledyne Tekmar