

AZYP CHIRAL COLUMNS



AZYP Chiral Phases Offer Unique Selectivity for Difficult Separations

AZYP's chiral phase chemistries offer a wide range of selectivities for your most challenging chiral separations. All phases are bonded to 2.7µm superficially porous particles for faster, highly efficient separations.

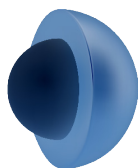
- Complementary selectivity to polysaccharide and brush-type chiral phases
- Fast chiral screening and method development
- Narrow peak widths improve sensitivity and resolution
- Compatible with a broad range of solvents for NPLC, RPLC and SFC



Phase Characteristics

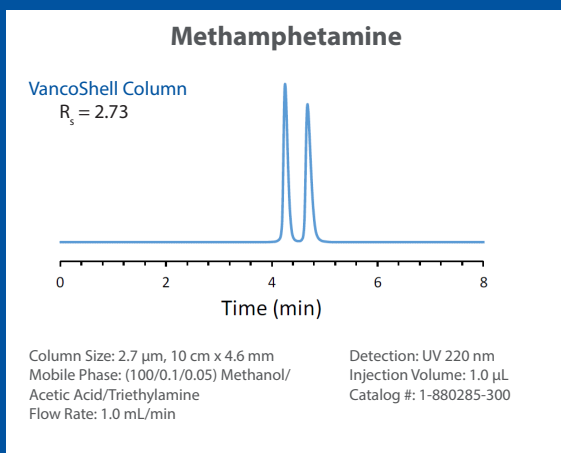
AZYP Phases	Chiral Selector	Key Applications
CDShell-RSP	beta-cyclodextrin, hydroxypropyl	Stimulants, fungicides, t-boc amino acids, neutral and charged aromatic compounds, amides, pesticides and atropisomers
TeicoShell	teicoplanin	Beta blockers, hydroxyl acids, amino acids, profens, hydantoins, benzodiazepines, carboxy-compounds, oxazolindines, N-blocked amino acids
NicoShell	modified macrocyclic glycopeptide	Azoles, nicotine analogs, pharmaceuticals, stimulants, beta blockers, amines
VancoShell	vancomycin	Various pharmaceuticals, amines, profens, amino alcohols, Beta Blockers
LarihcShell-P	alkyl derivatized cyclofructan CF-6	Primary amines (amino alcohols, amino esters, and amino amides)
QShell	quinine based	N-blocked amino acids, carboxylates

What is Core-shell Technology?

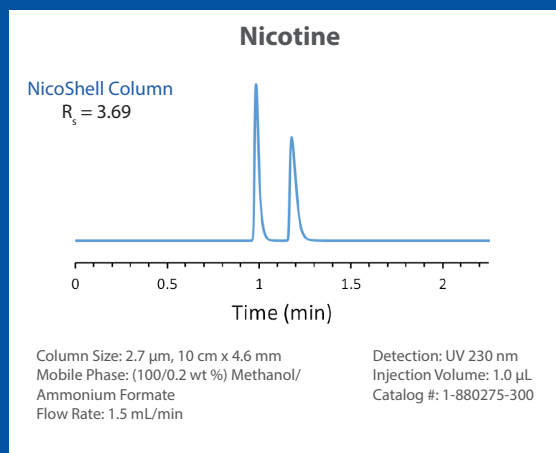


Core-shell (superficially porous particles) have a solid silica core, enveloped by a homogenous porous shell. This reduces band broadening and improves efficiency, largely due to more rapid analyte mass transfer – from the mobile phase through the stationary phase and back again. This is because diffusion only occurs in the porous, outer layer of the particle rather than the entire particle. The result is reduced analysis times and higher column efficiencies without generating extreme back-pressures.

AZYP Chiral Phases Provide Unique Selectivities at Exceptional Speeds!



LC separation of methamphetamine enantiomers can be difficult, but VancoShell provides full baseline resolution in minutes.



Core-shell technology enables unprecedented speeds for routine analyses. Nicotine enantiomers are fully resolved in under 1.5 minutes.

UNIQUE SELECTIVITY

For a wide range of challenging chiral separations



AZYP Chiral Column Ordering Information

Particle Size	Dimensions	CDSHELL-RSP Catalog#	LarihcShell-P Catalog#	NicoShell Catalog#	TeicoShell Catalog#	VancoShell Catalog#	QShell Catalog#
2.7 μ m	50mm x 2.1mm	1-880251-300	1-880291-300	1-880271-300	1-880261-300	1-880281-300	1-880310-300
	100mm x 2.1mm	1-880252-300	1-880292-300	1-880272-300	1-880262-300	1-880282-300	1-880311-300
	150mm x 2.1mm	1-880253-300	1-880293-300	1-880273-300	1-880263-300	1-880283-300	1-880312-300
	50mm x 4.6mm	1-880254-300	1-880294-300	1-880274-300	1-880264-300	1-880284-300	1-880313-300
	100mm x 4.6mm	1-880255-300	1-880295-300	1-880275-300	1-880265-300	1-880285-300	1-880314-300
	150mm x 4.6mm	1-880256-300	1-880296-300	1-880276-300	1-880266-300	1-880286-300	1-880315-300
	50mm x 3.0mm	1-880257-300	1-880297-300	1-880277-300	1-880267-300	1-880287-300	1-880316-300
	100mm x 3.0mm	1-880258-300	1-880298-300	1-880278-300	1-880268-300	1-880288-300	1-880317-300
	150mm x 3.0mm	1-880259-300	1-880299-300	1-880279-300	1-880269-300	1-880289-300	1-880318-300

Regis Technologies, Inc.
8210 Austin Avenue, Morton Grove, IL 60053
Phone: +1.847.967.6000
Email: cservice@registech.com

registech.com



CHROMATOGRAPHIC SPECIALTIES INC.

1-800-267-8103 • www.chromspec.com • tech@chromspec.com

