

NEW Rxi[®]-PAH GC Column

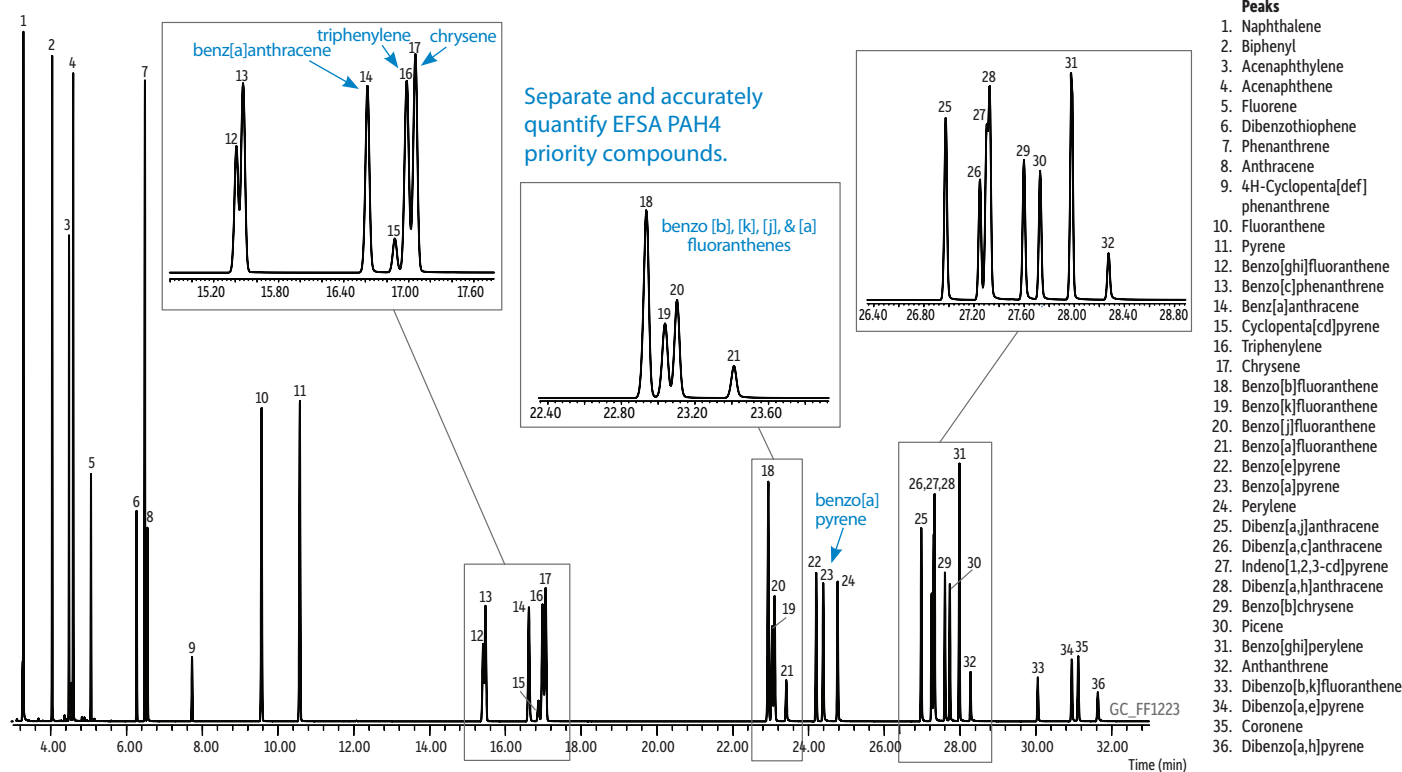
Resolve Important Isobaric Polycyclic Aromatic Hydrocarbons for Food Safety and Environmental Methods

- Separation of **all** EFSA PAH4 compounds: benz[a]anthracene, chrysene, benzo[b]fluoranthene, and benzo[a]pyrene.
- **Best resolution** of chrysene from interfering PAHs, triphenylene and cyclopenta[cd]pyrene.
- **Complete separation** of benzo [b], [k], [j], and [a] fluoranthenes.
- 360 °C thermal stability allows analysis of low volatility dibenzo pyrenes.



Rxi[®]-PAH GC columns were designed by Restek with a higher phenyl-content stationary phase that provides a unique selectivity to separate important polycyclic aromatic hydrocarbons (PAHs) for food safety that cannot be distinguished by mass spectrometry. Even difficult priority compounds, such as the European Food Safety Authority (EFSA) PAH4, are easily separated and accurately quantified, results that cannot be achieved on typical GC columns. Arylene modification and surface bonding of the stationary phase increase thermal stability and ruggedness so relatively nonvolatile, higher molecular weight PAHs can be analyzed routinely without interference from column bleed. Excellent column efficiency means that the column can be trimmed for maintenance purposes many times without losing critical PAH separations, including those that are part of environmental methods, as well as food safety testing.

Figure 1: A 40 m x 0.18 mm x 0.07 µm Rxi[®]-PAH column produces excellent resolution of critical peaks in less than 33 minutes!



Column: Rxi[®]-PAH, 40 m, 0.18 mm ID, 0.07 µm (cat.# 49316); **Sample:** NIST SRM 2260a PAH mix; **Diluent:** Toluene; **Conc.:** 0.2 - 2 µg/mL (SRM 2260a PAH mix was diluted 5x in toluene); **Injection:** 0.5 µL pulsed splitless (hold 0.58 min); **Liner:** Sky® 2 mm single taper w/wool (cat.# 23316.1); **Inj. Temp.:** 275 °C; **Pulse Pressure:** 80 psi (551.6kPa); **Pulse Time:** 0.6 min; **Purge Flow:** 40 mL/min; **Oven:** 110 °C (hold 1 min) to 210 °C at 37 °C/min to 260 °C at 3 °C/min to 350 °C at 11 °C/min (hold 4.5 min); **Carrier Gas:** He, constant flow; **Flow Rate:** 1.4 mL/min; **Detector:** MS; **Mode:** SIM; **Transfer Line Temp.:** 350 °C; **Analyzer Type:** Quadrupole; **Source Temp.:** 350 °C; **Quad Temp.:** 200 °C; **Solvent Delay Time:** 3.00 min; **Tune Type:** PFTBA; **Ionization Mode:** EI; **Instrument:** Agilent 7890A GC & 5975C MSD. For SIM program and quant ion information, visit www.restek.com and enter `GC_FF1223` in the search.



NEW GC Columns for PAH Analysis— Perfect for EFSA PAH4 Priority Compounds!

Whether you want more resolution or faster analysis times, new Rxi®-PAH columns have the selectivity and efficiency you need. Choose the configuration that is best for your separation.

Cat.#	Length	ID	df	Description
49316	40 m	0.18 mm	0.07 µm	Narrow inside diameter, thinner film, faster analysis, excellent separation of important PAHs, less sample loading capacity
49317	60 m	0.25 mm	0.10 µm	0.25 mm inner diameter, better sample loading capacity, highest resolution of important PAHs, longer analysis than 0.18 mm column, thin film allows elution of dibenzo pyrenes
49318	30 m	0.25 mm	0.10 µm	0.25 mm inside diameter, better sample loading capacity, faster analysis time than 60 m column, adequate resolution of important PAHs, lower cost column

Recommended for PAH Analysis



23316

Sky® 2.0 mm ID Single Taper Inlet Liner

Suggested for
0.18 mm ID columns.

For Agilent GCs equipped with split/splitless inlets

ID x OD x Length	qty.	cat.#
Single Taper, Sky Technology, Borosilicate Glass		
2.0 mm x 6.5 mm x 78.5 mm	ea.	23315.1
2.0 mm x 6.5 mm x 78.5 mm	5-pk.	23315.5
2.0 mm x 6.5 mm x 78.5 mm	25-pk.	23315.25
Single Taper, Sky Technology, Wool, Borosilicate Glass		
2.0 mm x 6.5 mm x 78.5 mm	ea.	23316.1
2.0 mm x 6.5 mm x 78.5 mm	5-pk.	23316.5
2.0 mm x 6.5 mm x 78.5 mm	25-pk.	23316.25

Sky® 4.0 mm ID Single Taper Inlet Liner

Suggested for
0.25 mm ID columns.

For Agilent GCs equipped with split/splitless inlets

ID x OD x Length	qty.	cat.#
Single Taper, Sky Technology, Borosilicate Glass		
4.0 mm x 6.5 mm x 78.5 mm	ea.	23302.1
4.0 mm x 6.5 mm x 78.5 mm	5-pk.	23302.5
4.0 mm x 6.5 mm x 78.5 mm	25-pk.	23302.25
Single Taper, Sky Technology, Wool, Borosilicate Glass		
4.0 mm x 6.5 mm x 78.5 mm	ea.	23303.1
4.0 mm x 6.5 mm x 78.5 mm	5-pk.	23303.5
4.0 mm x 6.5 mm x 78.5 mm	25-pk.	23303.25

Dual Vespel® Ring Inlet Seals Washerless, leak-tight seals for Agilent GCs

- Does not require a separate washer.
- Requires less torque to seal.
- Does not require retightening of reducing nut after several oven cycles.
- Extends column lifetime by preventing oxygen from reaching the column.
- Same price as the regular inlet seals with washers.



Patented

	2-pk.	10-pk.	50-pk.
0.8 mm ID Dual Vespel Ring Inlet Seal			
Gold-Plated	21240	21241	23418
Siltek-Treated	21242	21243	23419
Stainless Steel	21238	21239	23420
1.2 mm ID Dual Vespel Ring Inlet Seal			
Gold-Plated	21246	21247	
Siltek-Treated	21248	21249	
Stainless Steel	21244	21245	

Visit www.restek.com/rxi-pah
for easy online ordering.

PATENTS & TRADEMARKS

Restek patents and trademarks are the property of Restek Corporation. (See www.restek.com/Patents-Trademarks for full list.) Other trademarks appearing in Restek literature or on its website are the property of their respective owners. The Restek registered trademarks used here are registered in the United States and may also be registered in other countries.



Restek U.S. • 110 Benner Circle • Bellefonte, PA 16823 • 1-814-353-1300 • 1-800-356-1688 • fax: 1-814-353-1309 • www.restek.com
Restek France • phone: +33 (0)1 60 78 32 10 • fax: +33 (0)1 60 78 70 90 • www.restek.fr
Restek GmbH • phone: +49 (0)6172 2797 0 • fax: +49 (0)6172 2797 77 • www.restekgmbh.de
Restek Ireland • phone: +44 (0)2890 814576 • fax: +44 (0)2890 814576 • e-mail: restekireland@aol.com
Restek Japan • phone: +81 (3)6459 0025 • fax: +81 (3)6459 0025 • e-mail: restekjapan@restek.com
Thames Restek U.K. LTD • phone: +44 (0)1494 563377 • fax: +44 (0)1494 564990 • www.thamesrestek.co.uk

Lit. Cat.# GNTS1718-UNV

© 2012 Restek Corporation. All rights reserved.
Printed in the U.S.A.

